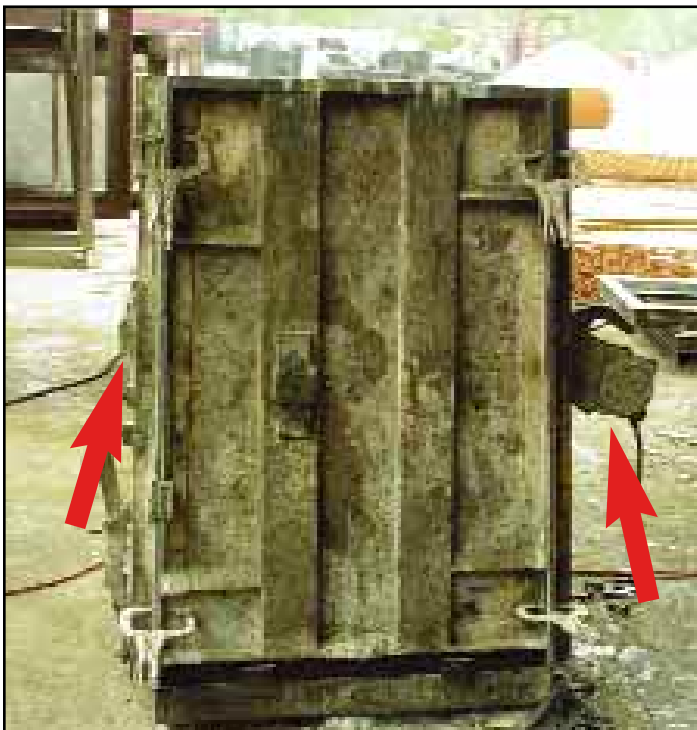
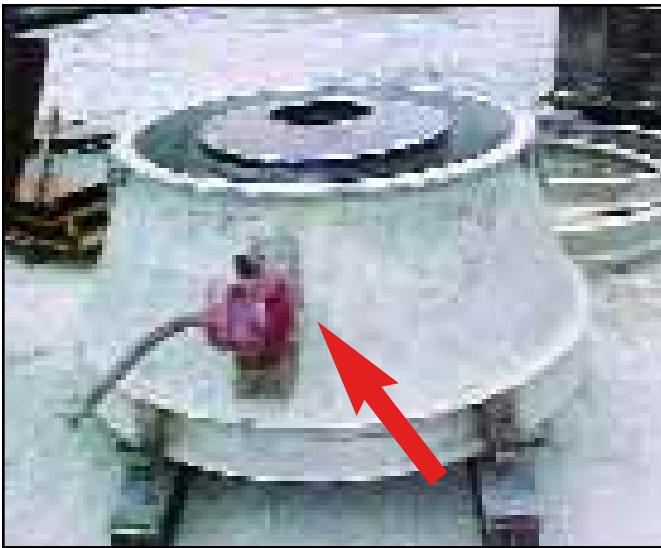


**Model US-900** electric 115 volt vibrator with UW-2 wedge bracket is attached to UWF female bracket welded to form side half way up. A second UWF bracket is welded to opposite side 1/2 way up form side. See below for vibrating procedure.



5' square manhole form uses **Model US-1600** 115 volt electric vibrator with wedge form bracket (page 5). Female vibrator bracket is mounted 1/2 way up on opposite sides. Vibrator is started when the concrete pour reaches it, and is left on until pour is complete. The vibrator is then moved to opposite side and started and kept running until no more air bubbles break on the surface and the surface has a glossy appearance.



SVRL-4000 on precast manhole

**2 Model SVRL-4000's** on lug bracket (page 0) 3' high form. Vibrator placed 1/2 way up form side. Second vibrator directly opposite also 1/2 way up. Same vibrator moved from one side to the other started to vibrate when concrete reached vibrator. Continued to vibrate until form was full, then removed vibrator and put on opposite side. Kept vibrating until slick surface appears on top.



US-1600 on manhole

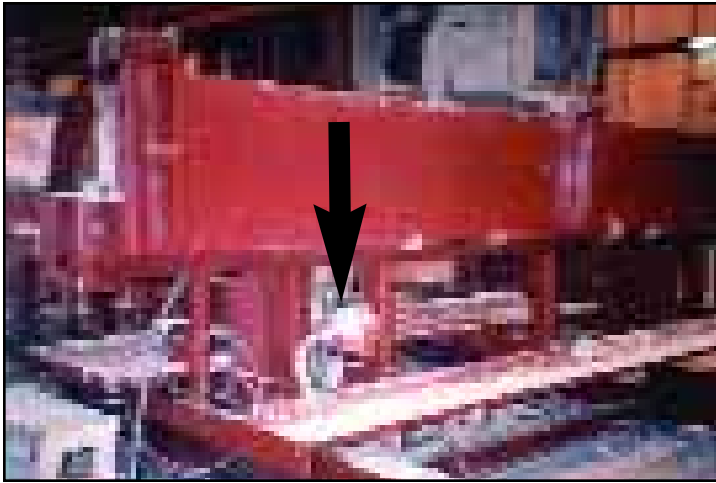
**2 Model US-1600's** on a 6' high form - one placed 2' from bottom, the other 180° apart and 2' from top. Lower vibrator starts running when concrete reaches it and continues to vibrate until pour reaches high vibrator. Stop bottom vibrator and move to high position and start to vibrate until pour complete and no more air bubbles break on surface and a glistening surface appears on top.



SVRL on manhole form

**2 Model SVRL's** on a 6' high form - one placed 2' from bottom, the other 180° apart and 2' from top. Lower vibrator starts running when concrete reaches it and continues to vibrate until pour reaches high vibrator. Stop bottom vibrator and move to high position and started to vibrate until pour complete and no more air bubbles break on surface and a glistening surface appears on top.

## SMALL PRE-CAST FORMS CONTINUED



**LEFT:**  
**SVRLS-5500** MOUNTED ON LEG  
OF LARGE FORM.  
(vibrators and brackets page 6)

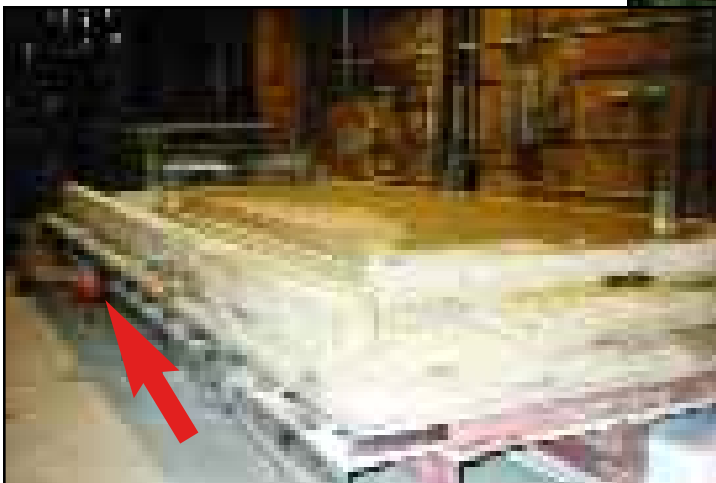
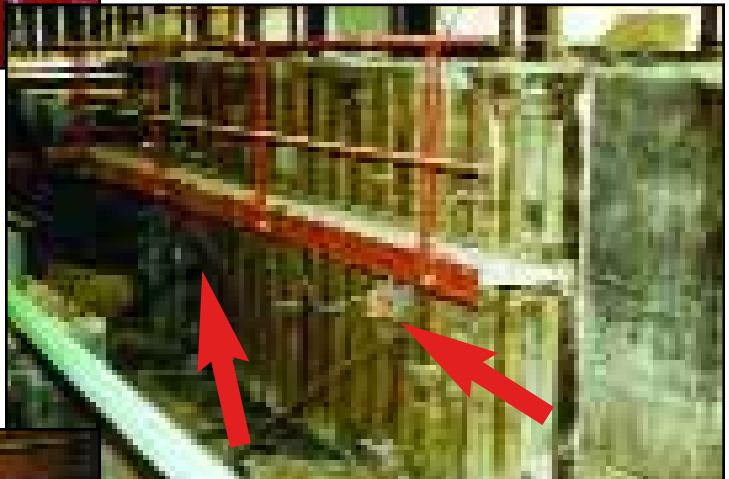
**PROBLEM:** Customer wanted to decrease pouring time and improve appearance of finished product.

**SOLUTION:** Two Model SVRLS-5500's were mounted on the front stiffener directly 180° opposite each other.

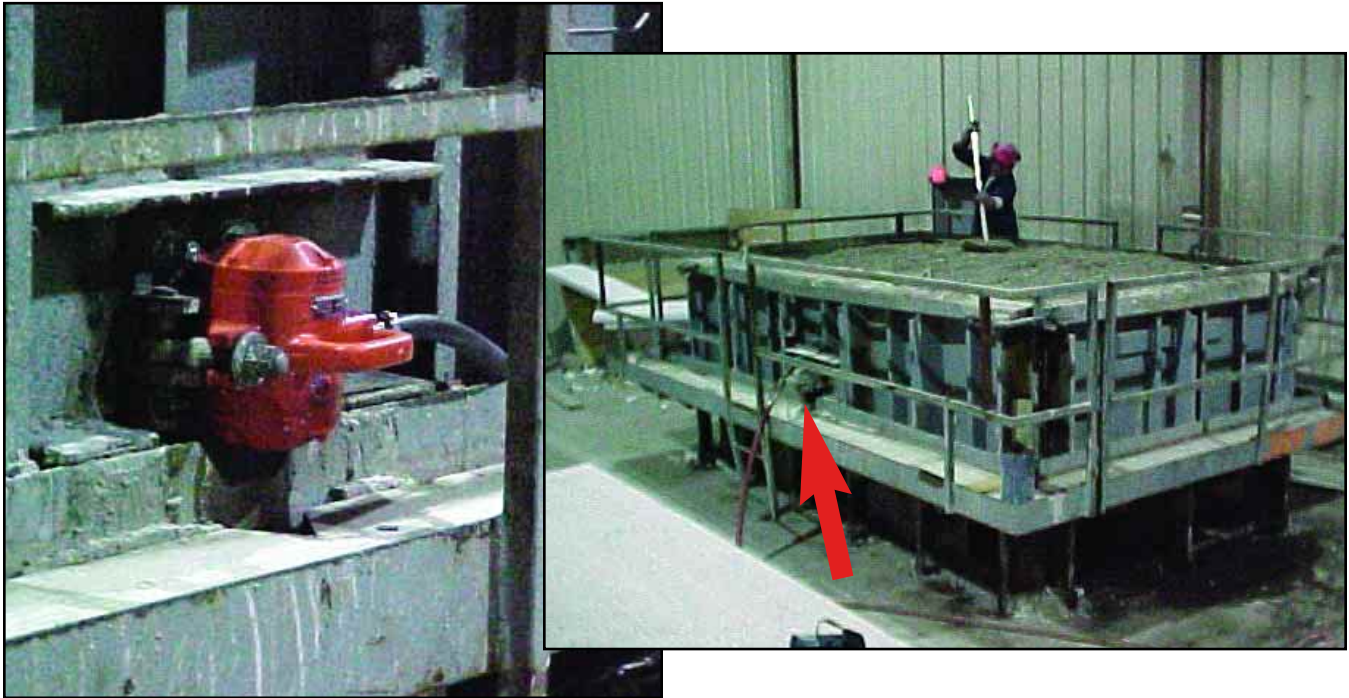
**CUSTOMER SAYS:** The pour time was drastically reduced. Previously two men used poker vibrators, now only one man was needed. Product came out beautiful without blemishes and customer was very happy.



**RIGHT:**  
Large culvert form uses  
**SVRLS-5500** vibrators.  
2' from ends,  
6' center to check  
(vibrators and  
brackets page 6)



**LEFT:**  
Large table with 2 **SVRL-5500**  
vibrators used to cast concrete in all  
types of wooden molds.  
(vibrators and brackets page 6)



**Model CCL-7000** silent turbine vibrator is used on forms with “self consolidating concrete” for 5-10 seconds to improve the finish to an almost architectural one.



US-1600 on hog slot table

**Model 1600** electric vibrators with wedge brackets on hog-slot production form. The vibrators were used to slump down the concrete pile as it was dumped onto the form.

Two electric **Model US-1600** vibrators with clamp-on bracket were used on this 3 x 3 x 6' high manhole form.

US-1600 on box form





SVRL-5500 on large mold (2 units used.)



**ABOVE:**

**PROBLEM:** 54" high barrier form – how many vibrators are needed?

**FORM:** Steel form wood beams and rubber pads.

**WEIGHT:** Form plus concrete - 8000 lbs.

**CONCRETE:** 2" slump

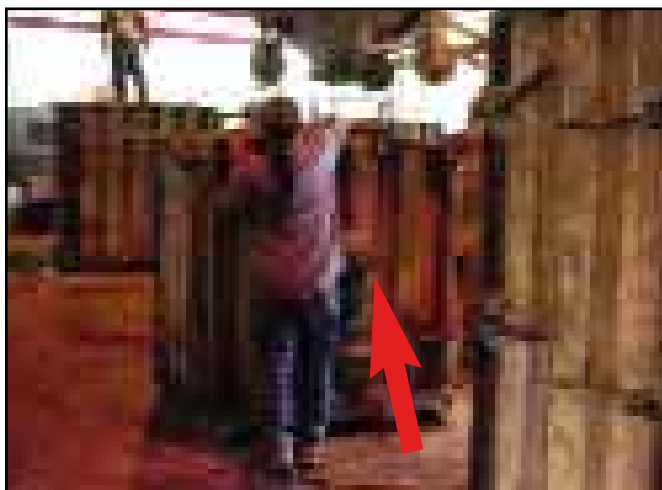
Total force needed = for 2" slump add 75% = 14000 LBS.

Use 4 SVR-4000 pneumatic vibrators each 4000 lbs. Total 16000 lbs. force (page 14)

Two mounted close to bottom on one side – two opposite half-way up form side.



Two **Model SVRLS** pneumatic vibrators on lug brackets were mounted diametrically opposite on this box form.



**LEFT:**

Two US-1600 electric vibrators were used on this manhole mounted just above centerline on opposite sides. Vibrators were turned on when concrete reached them and continued to run until form was filled and no more air bubbles burst on the top.

# LARGE PRE-CAST FORMS CONTINUED



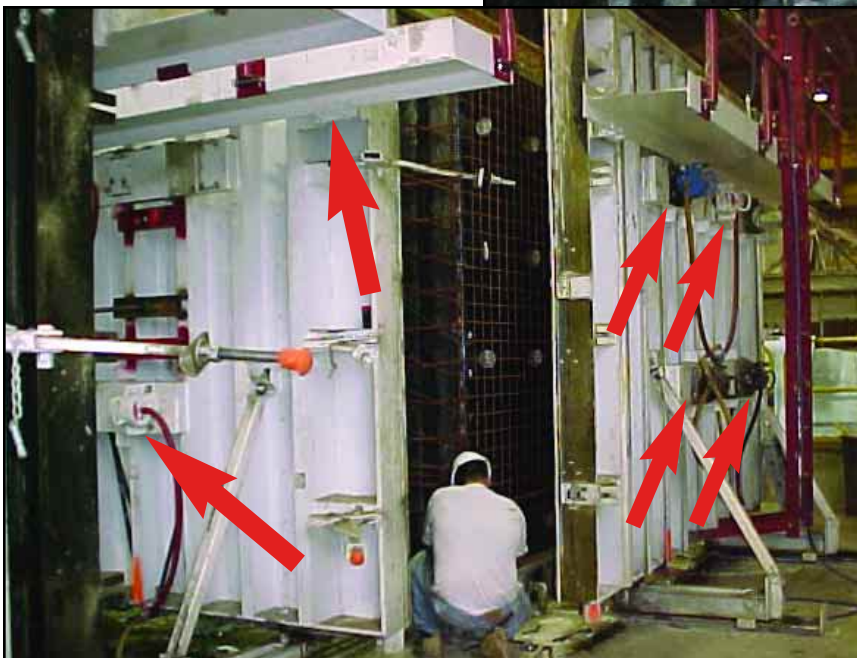
**LEFT:**

24 **Model CCL-7000** lug type silent turbine pneumatic vibrators were mounted on both the inside core and outside walls of a precast building form.



**RIGHT:**

Two **Model SVRL-6500** high frequency pneumatic vibrators were installed opposite each other on form with an adjustable pallet.



SVRLS on prison cell form



**DID YOU KNOW?**  
VIBCO offers free plant surveys.  
Call 800-633-0032 today  
for more information!

**LEFT:**

12 **SVRL-6500** high frequency pneumatic vibrators were mounted to each of the long outside walls and 2 on the short end walls.